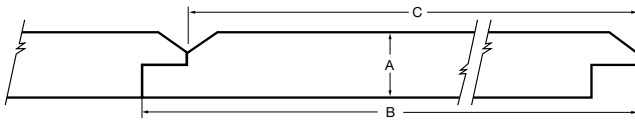


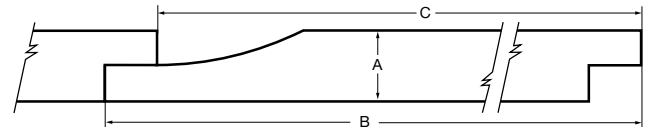
## TECHNICAL BULLETIN—PRODUCT SIZE INFORMATION

### Craftsman Collection™ Siding

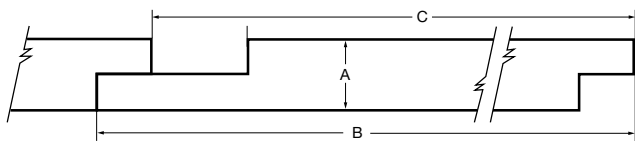
V-Rustic			
Nominal Size	Actual Thickness (A)	Actual Width (B)	Reveal (C)
1 x 6	11/16"	5-1/2"	5"
1 x 8	11/16"	7-1/2"	7"
1 x 10	11/16"	9-1/2"	9"



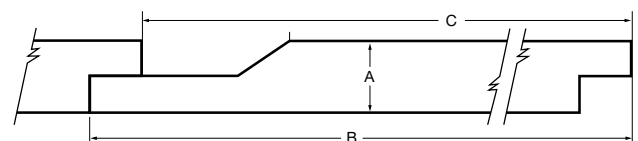
Cove/Dutch Lap			
Nominal Size	Actual Thickness (A)	Actual Width (B)	Reveal (C)
1 x 6	11/16"	5-1/2"	4-31/32"
1 x 8	11/16"	7-1/4"	6-23/32"
1 x 10	11/16"	9-1/4"	8-23/32"



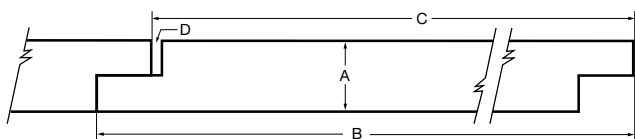
Channel			
Nominal Size	Actual Thickness (A)	Actual Width (B)	Reveal (C)
1 x 6	11/16"	5-1/2"	4-31/32"
1 x 8	11/16"	7-1/4"	6-23/32"
1 x 10	11/16"	9-1/4"	8-23/32"



Channel Bevel			
Nominal Size	Actual Thickness (A)	Actual Width (B)	Reveal (C)
1 x 6	11/16"	5-1/2"	4-31/32"
1 x 8	11/16"	7-1/2"	6-31/32"
1 x 10	11/16"	9-1/2"	8-31/32"



Reversible Shiplap-Nickel Gap—Nickel Gap Side				
Nominal Size	Actual Thickness (A)	Actual Width (B)	Reveal (C)	Gap (D)
1 x 4	11/16"	3-1/2"	3-3/32"	5/64"
1 x 6	11/16"	5-1/2"	5-3/32"	5/64"
1 x 8	11/16"	7-1/4"	6-13/16"	5/64"
1 x 10	11/16"	9-1/4"	8-13/16"	5/64"



Reversible Shiplap-Nickel Gap-Shiplap Side			
Nominal Size	Actual Thickness (A)	Actual Width (B)	Reveal (C)
1 x 4	11/16"	3-1/2"	3-3/32"
1 x 6	11/16"	5-1/2"	5-3/32"
1 x 8	11/16"	7-1/4"	6-13/16"
1 x 10	11/16"	9-1/4"	8-13/16"

