

Reversible Shiplap-Nickel Gap Siding

Smooth Nickel Gap/Woodgrain Shiplap



TruExterior® Siding & Trim's reversible profile comes in two formats: one features smooth Nickel Gap on one side and woodgrain Shiplap on the other; the second has woodgrain Nickel Gap on one side and smooth Shiplap on the other. A rabbeted edge ensures panels fit together perfectly to create the authentic spacing—the tight joint appearance of Shiplap on one side and the nickel-sized space of Nickel Gap on the other. Like other TruExterior products, the profile comes pre-primed and does require paint.



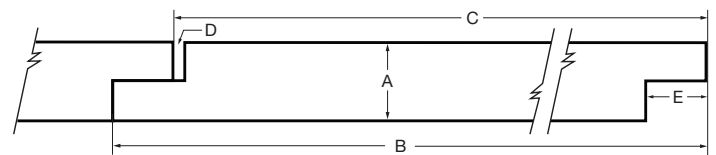
WOODGRAIN



SMOOTH

Nickel Gap Side

Nominal Size	Actual Thickness (A)	Actual Width (B)	Reveal (C)	Gap (D)	Tongue (E)
1 x 4	11/16"	3-1/2"	3-3/32"	5/64"	13/32"
1 x 6	11/16"	5-1/2"	5-3/32"	5/64"	13/32"
1 x 8	11/16"	7-1/4"	6-13/16"	5/64"	13/32"
1 x 10	11/16"	9-1/4"	8-13/16"	5/64"	13/32"

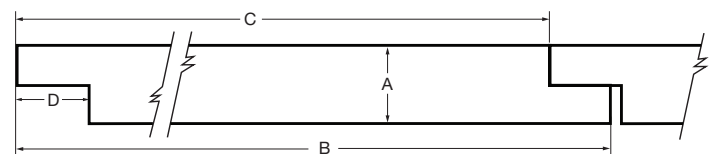


Woodgrain Nickel Gap/Smooth Shiplap



Shiplap Side

Nominal Size	Actual Thickness (A)	Actual Width (B)	Reveal (C)	Tongue (D)
1 x 4	11/16"	3-1/2"	3-3/32"	1/2"
1 x 6	11/16"	5-1/2"	5-3/32"	1/2"
1 x 8	11/16"	7-1/4"	6-13/16"	1/2"
1 x 10	11/16"	9-1/4"	8-13/16"	1/2"



[TruExterior.com](https://www.TruExterior.com)